

Accelerator Mass Spectrometry Bioanalytical Services



Company Information

- First full-service accelerator mass spectrometry (AMS) CRO in North America
- GLP services since April 2006
- AMS experience since mid-1990s
- Successfully delivered on a range of AMS studies to top 10 global pharmaceutical companies and biotechs, including Merck, BMS & Novartis
- 25,000 AMS samples processed and measured to date
- Work regularly with Phase 1 Clinical Units in the US (Comprehensive, Covance) and EU (Quotient, PRA International) as well as Cancer Centers (Swedish Medical Center, Cleveland Clinic)
- Approximately 70% of current study pipeline is repeat business
- Leader in pricing, sensitivity and speed!

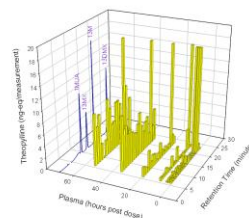
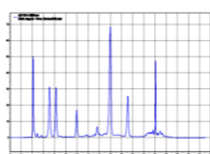
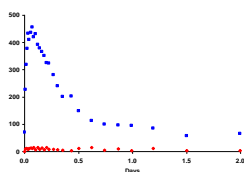
Advantages of AMS Methodology

AMS quantifies ^{14}C isotope in biological samples with a limit of quantitation of 0.001 DPM. Our AMS services provide six orders of magnitude better sensitivity than liquid scintillation based methods and three orders of magnitude better sensitivity compared to most LC-MS/MS methods. The increased sensitivity overcomes specific challenges faced in preclinical and clinical studies, including:

- Reduces chemical and radiochemical dose exposure
- Minimizes sample requirements
- Avoids matrix effects
- Eliminates formulation challenges
- Delivers exquisite sensitivity with little or no method development (10^{-18}M)
- Provides exceptional measurement precision (<0.5%)

Areas of Expertise

- Absolute Bioavailability
- Metabolite Profiling
- Mass Balance



Accium BioSciences offers a range of ultrasensitive bioanalytical services to the pharmaceutical industry. The company operates the first commercial Accelerator Mass Spectrometry (AMS) facility in the U.S. Our laboratory houses a state-of-the-art National Electrostatics Model 1.5SDH-1 Pelletron Accelerator, a dual acceleration (tandem) electrostatic accelerator. This accelerator, along with other associated items, forms an AMS system especially constructed to measure the amount of ^{14}C in small biological samples.

In 1996, Accium's founder, Dr. Ali Arjomand, designed and conducted the first AMS study involving human subjects. The research required detailed design, planning, ethics board approval, methods development, laboratory analysis and mathematical modeling of the AMS results. The work was first presented at the 1997 Mathematical Models in Experimental Nutrition Conference.

Accium BioSciences is also leading the development of new AMS applications that cover a wide range of studies, from *in vitro* cell culture studies to understanding individualized tumor drug uptake in patients. Please contact us to learn more about our current development efforts in these and other research areas.



Accium BioSciences
measure more. learn more.

550 17th Avenue, Suite 550, Seattle, WA 98122 USA
(206) 281-3915 info@acciumbio.com www.acciumbio.com